

All-weather Condenser / Evaporator

ACE-65-P-1/6-SDE

ACE-75-P-1/6-SDE



| MODEL APPLICATION TABLE | | | | | |
|-------------------------|----------|-------|---------|-----|-----------------|
| MODEL | SIZE | REFR. | VOLTAGE | FAN | MODEL REVISIONS |
| ACE | 65 75 | P | 1/6 | SDE | 00 |

ALL DIMENSIONS IN INCHES (MM)
UNLESS STATED OTHERWISE

| DIMENSION VALUE | TOLERANCE |
|-----------------|-------------|
| UNDER 3" | +/- 0.030" |
| OVER 3" | +/- 0.035" |
| ANGLES | +/- 0.5 DEG |

THIS DRAWING AND INFORMATION
CONTAINED HEREIN ARE THE
CONFIDENTIAL PROPERTY OF
MARITIME GEOTHERMAL LTD. DO
NOT DISCLOSE OR REPRODUCE
WITHOUT WRITTEN PERMISSION.



| | |
|------------------|-----------|
| Drawn By | Date |
| Dan Rheault | 8/21/2013 |
| Checked By | Date |
| Dan Rheault | 8/21/2013 |
| Eng. Approved By | Date |
| Mfg. Approved By | Date |
| Approved By | Date |

| | | | | |
|-----|-----------------|------------|------------|-------------|
| 00 | Prelim. Release | D. Rheault | D. Rheault | 21-Aug-2013 |
| REV | ECO # | IMPLY BY | APVD BY | DATE |

MARITIME GEOTHERMAL LTD.

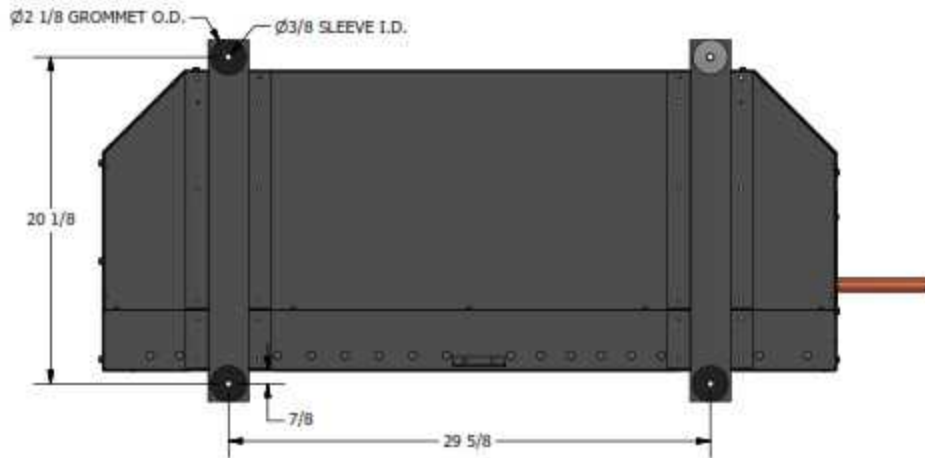
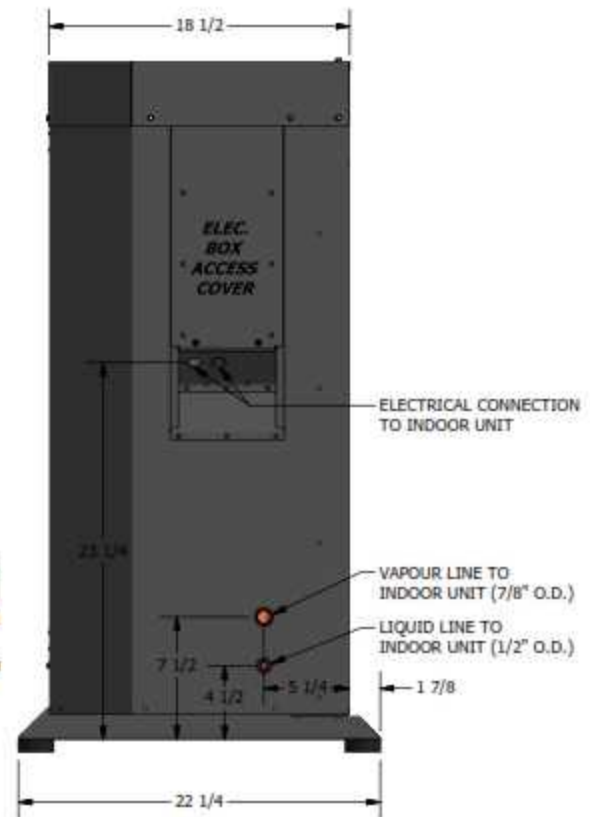
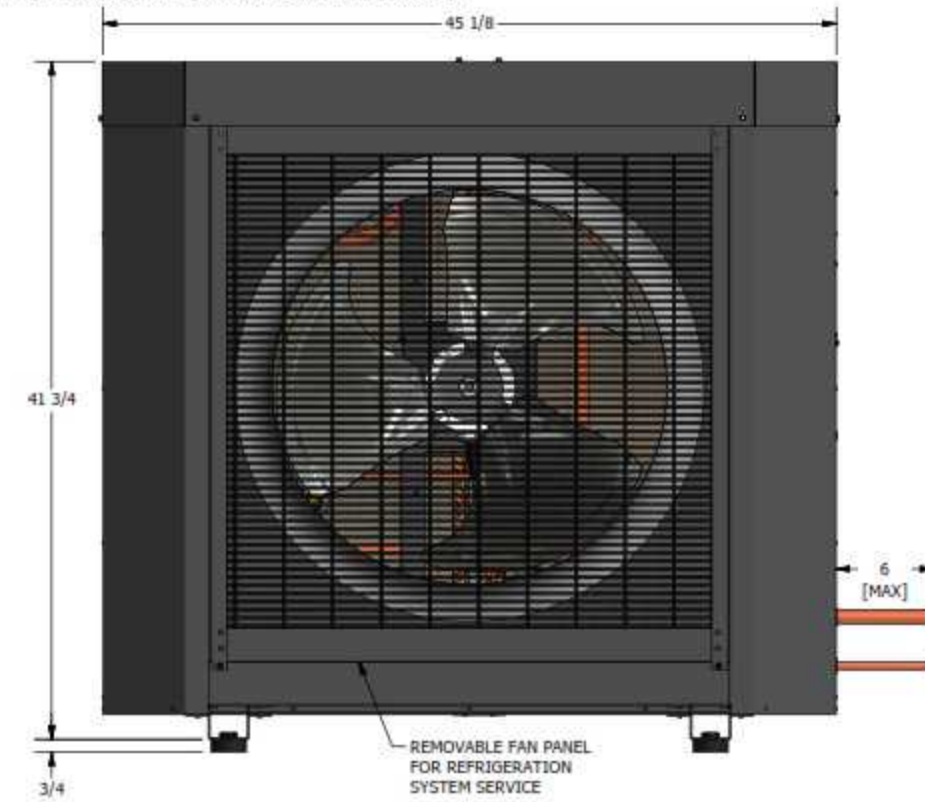
P.O. Box 2333
170 Plantation Rd.
Pettitcodiac, NB CANADA E4Z 6H4

Drawing Name: ACE-65/75-P-1/6-SDE

OUTDOOR AIR HANDLER

| | | | |
|------|----------------|----------|--------|
| Size | Drawing Number | Revision | Sheet |
| A3 | 001797DSN | 00 | 1 / 10 |

INSTALLATION INFORMATION

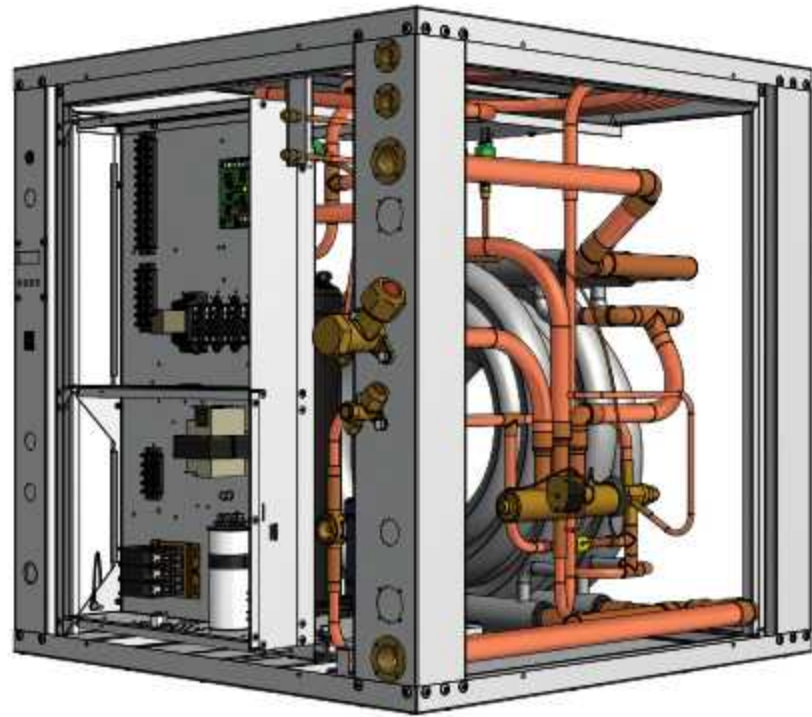


| | |
|--|-------------|
| ALL DIMENSIONS IN INCHES (MM) UNLESS STATED OTHERWISE | |
| DIMENSION VALUE | TOLERANCE |
| UNDER 2" | +/- 1/32" |
| OVER 2" | +/- 1/16" |
| ANGLES | +/- 0.5 DEG |
| THIS DRAWING AND INFORMATION CONTAINED HEREIN ARE THE CONFIDENTIAL PROPERTY OF MARITIME GEOTHERMAL LTD. DO NOT DISCLOSE OR REPRODUCE WITHOUT WRITTEN PERMISSION. | |
| REDUCTION STYLE | |
| | |

| | |
|------------------|-----------|
| Drawn By | Date |
| Dan Rheault | 8/21/2013 |
| Checked By | Date |
| Dan Rheault | 8/21/2013 |
| Eng. Approved By | Date |
| Mfg. Approved By | Date |
| Approved By | Date |

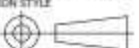
| | | | |
|------|----------------|--|---------|
| | | P.O. Box 2555 170 Plantation Rd. Pettiboeac, NB CANADA E4E 0H4 | |
| | | Drawing Name: ACE-65/75-P-1/6-SDE | |
| Size | Drawing Number | Revision | Sheet |
| A3 | 001797DSN | 00 | 10 / 10 |

AtW-75-HACW-P--***

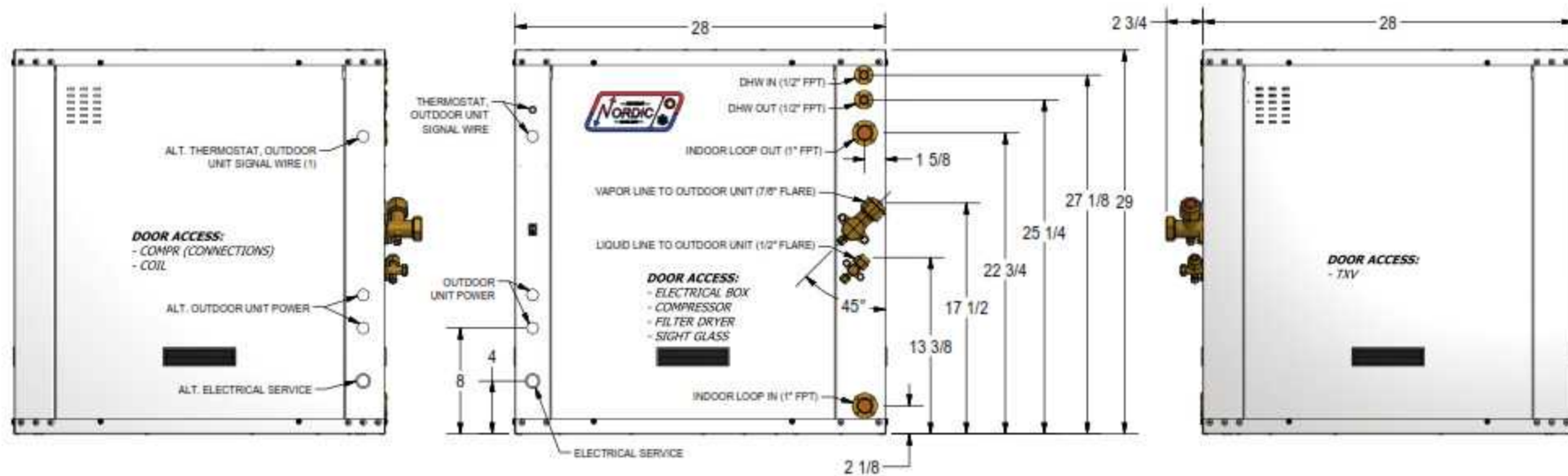


| MODEL APPLICATION TABLE | | | | | | |
|-------------------------|------|----------|-------|------------------|-------------|-----------------|
| MODEL | SIZE | FUNCTION | REFR. | VOLTAGE / COMPR. | INDOOR COIL | MODEL REVISIONS |
| AtW | 75 | HACW | P | 1 T | C Z | 01 |
| | | | | 2 T | | |
| | | | | 4 T | | |
| | | | | 5 T | | |
| | | | | 6 S | | |
| | | | | 7 T | | |

| | | | | |
|-----|-----------------|------------|------------|------------|
| 01 | Initial Release | D. Rheault | D. Rheault | 1-Sep-2013 |
| REV | ECO # | IMPLY BY | APVD BY | DATE |

| | | |
|--|--|---|
| <small>ALL DIMENSIONS IN INCHES (MM) UNLESS STATED OTHERWISE.</small> <small>DIMENSION VALUE TOLERANCE</small> <small>UNDER 2" +/- 1/32"</small> <small>OVER 2" +/- 1/16"</small> <small>ANGLES +/- 0.5 DEG</small> | Drawn By Dan Rheault Date 9/1/2013 | MARITIME GEOTHERMAL LTD. P.O. Box 2335 170 Plantation Rd. Pettitcodiac, NB CANADA E4Z 0H4 |
| | Checked By Dan Rheault Date 9/1/2013 | |
| <small>THIS DRAWING AND INFORMATION CONTAINED HEREIN ARE THE CONFIDENTIAL PROPERTY OF MARITIME GEOTHERMAL LTD. DO NOT DISCLOSE OR REPRODUCE WITHOUT WRITTEN PERMISSION.</small> PROJECTION STYLE  | Eng. Approved By Date | Drawing Name: AtW-75-HACW-P-**-* AIR-TO-WATER HEAT PUMP WITH DESUPERHEATER |
| | Mfg. Approved By Date | Size: A3 Drawing Number: 001807DSN |
| Approved By Date | | |

INSTALLATION INFORMATION



| | | | | | |
|--|--|----------------------------------|------------------------------------|--|-------------------------|
| ALL DIMENSIONS IN INCHES (MM) UNLESS STATED OTHERWISE. | | Drawn By Dan Rheault | | Date 9/1/2013 | |
| DIMENSION VALUE TOLERANCE | | Checked By Dan Rheault | | Date 9/1/2013 | |
| UNDER 2" +/- 1/32" | | Eng. Approved By | | Date | |
| OVER 2" +/- 1/16" | | Mfg. Approved By | | Date | |
| ANGLES +/- 0.5 DEG | | Approved By | | Date | |
| THIS DRAWING AND INFORMATION CONTAINED HEREIN ARE THE CONFIDENTIAL PROPERTY OF MARITIME GEOTHERMAL LTD. DO NOT DISCLOSE OR REPRODUCE WITHOUT WRITTEN PERMISSION. | | Projection Style | | Drawing Name: AtW-75-HACW-P-*** | |
| | | Size A3 | Drawing Number 001807DSN | Revision 01 | Sheet 24 / 24 |

MARITIME GEOTHERMAL LTD.
 P.O. Box 2335
 170 Plantation Rd.
 Pettitodiac, NB CANADA E4Z 6H4